

Os Palatinum:

♀ Viscerocranium'u oluşturan çift kemiklerden

♀ 1 palatinum 'L' 2 palatinum 'L' şeklinde

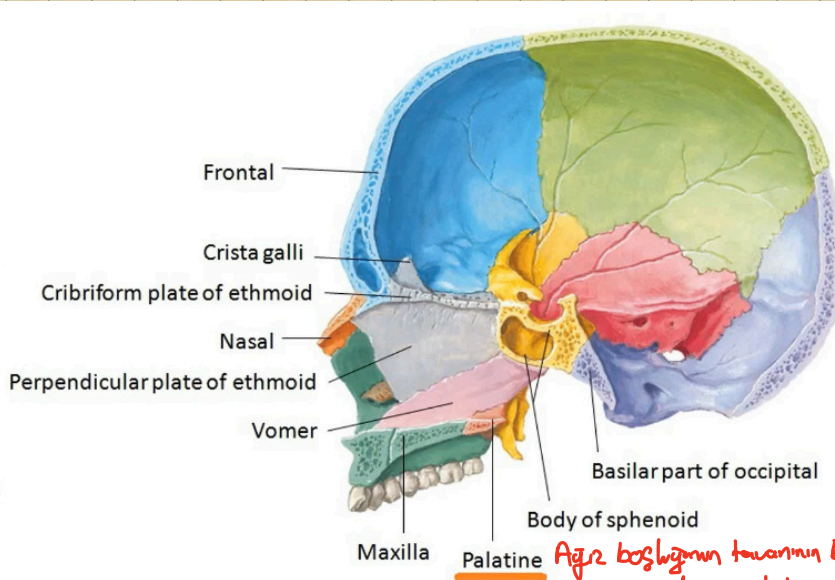
♀ Lamina horizontalis Lamina Horizontalis

Lamina perpendicularis Lamina Perpendicularis

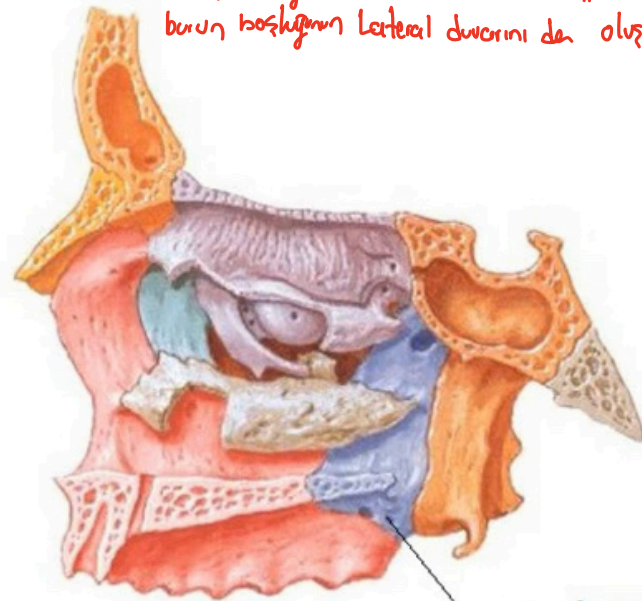
Processus pyramidalis Proc. Pyramidalis

Processus sphenoidalis Proc. Sphenoidalis

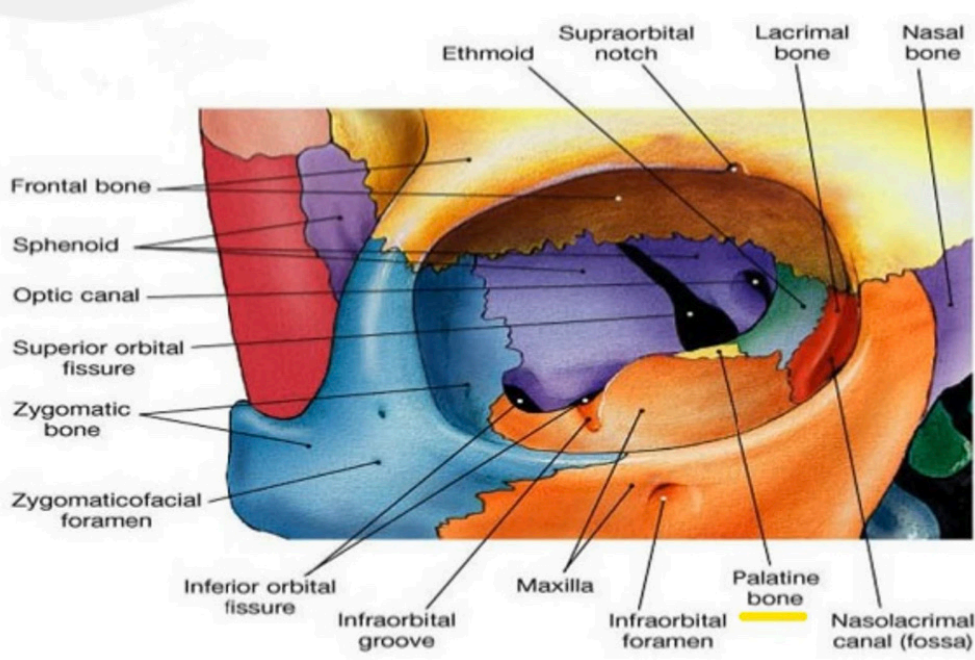
Processus orbitalis Proc. Orbitalis



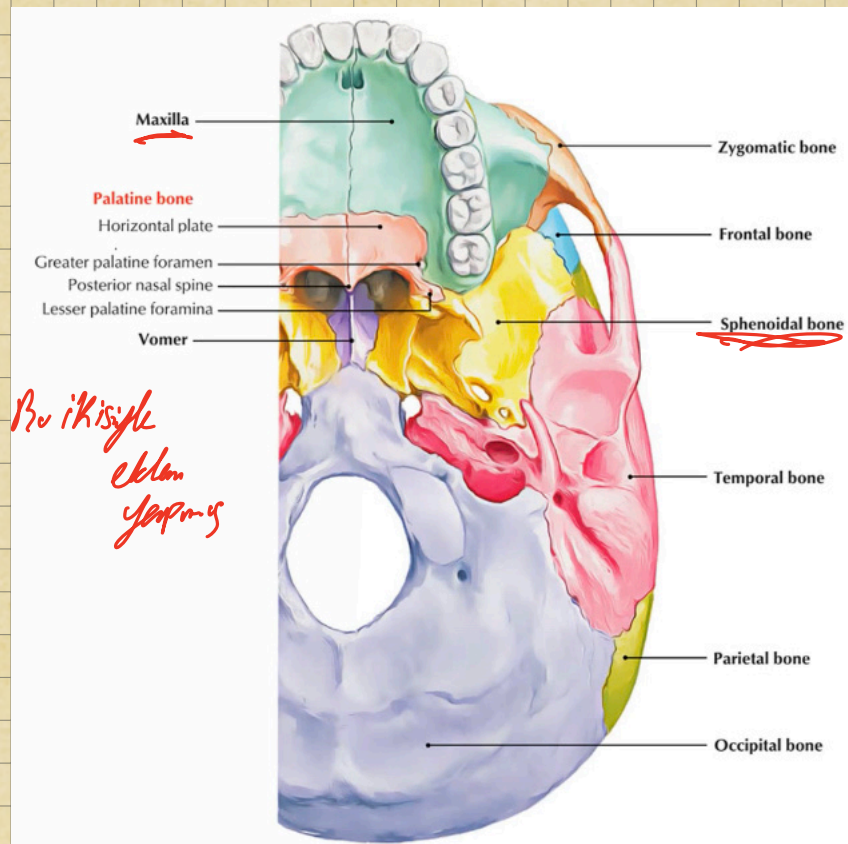
Ağız boşluğunun tavanının bir kısmını
burun boşluğunun tabanının bir kısmını oluşturur
burun boşluğunun lateral duvarını da oluşturur



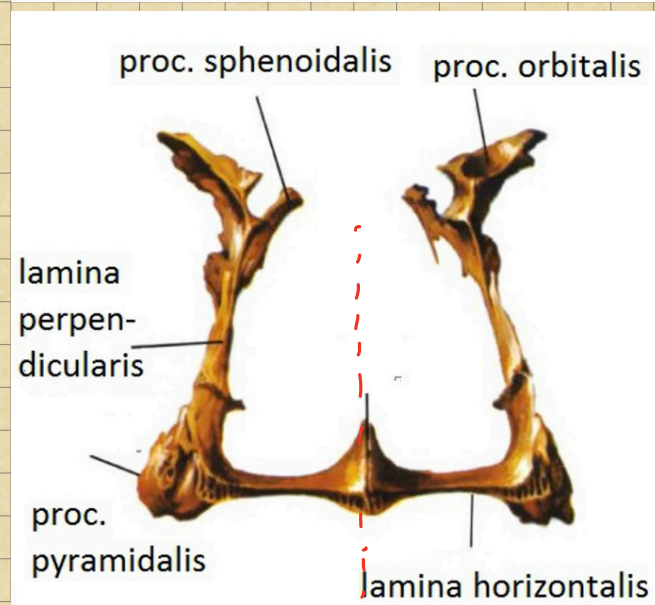
os palatinum

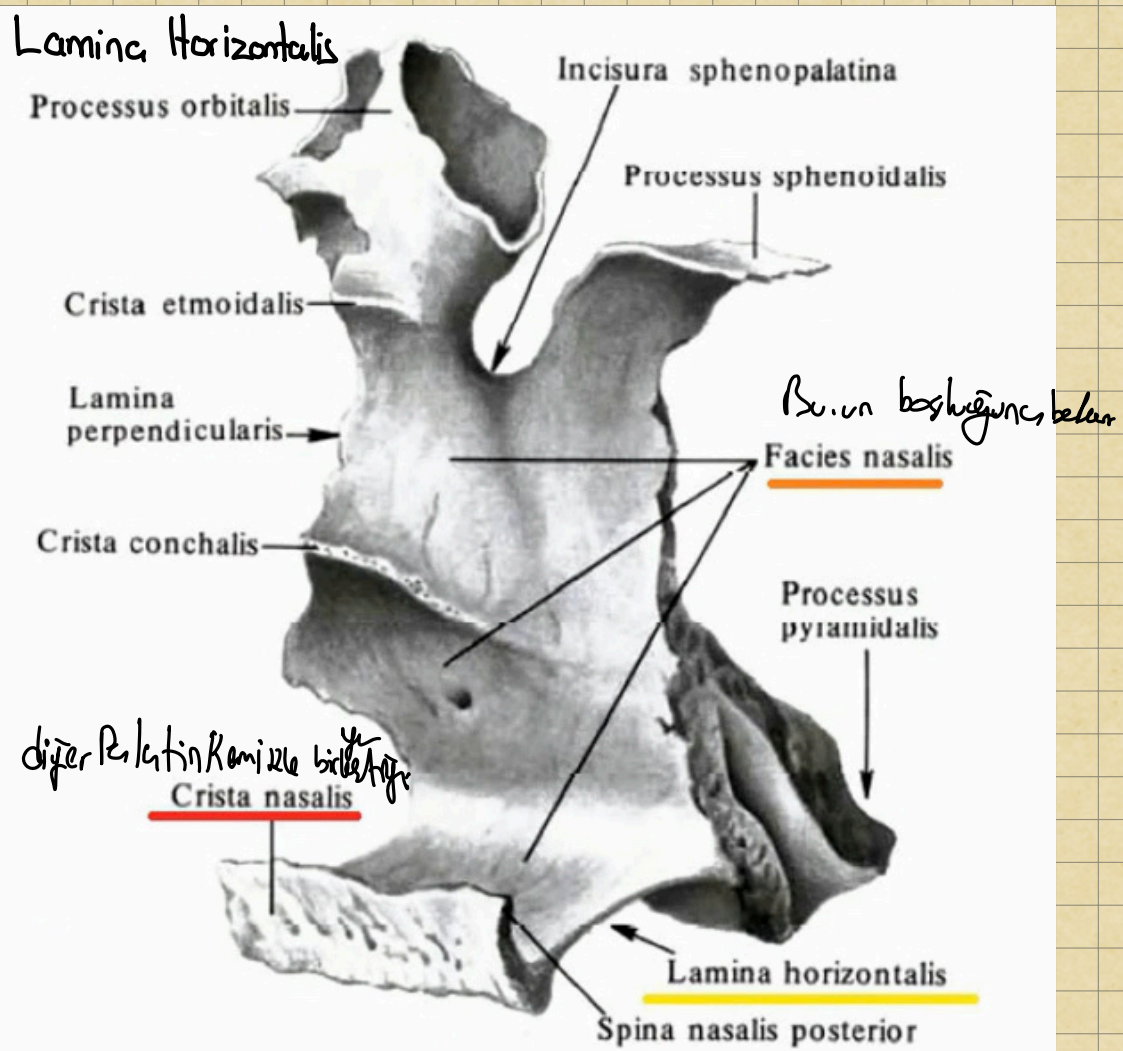
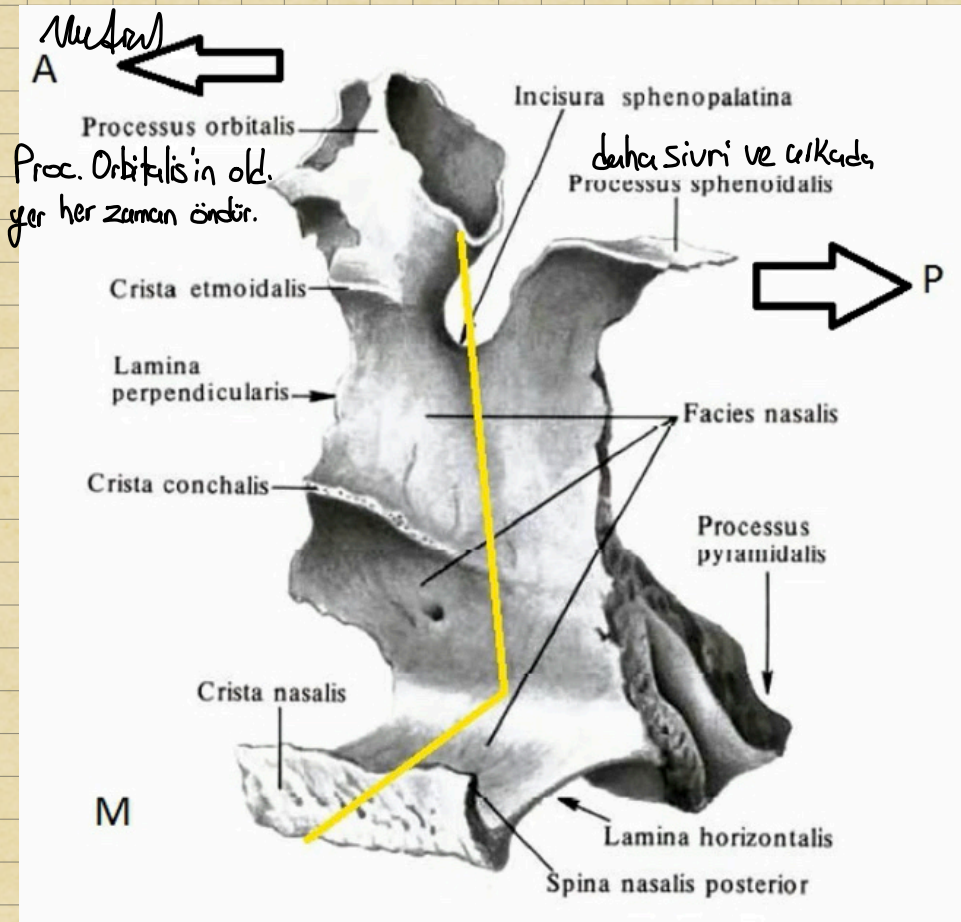


*Cok az da dsa
Orbitanın tabanını
kapatır.*

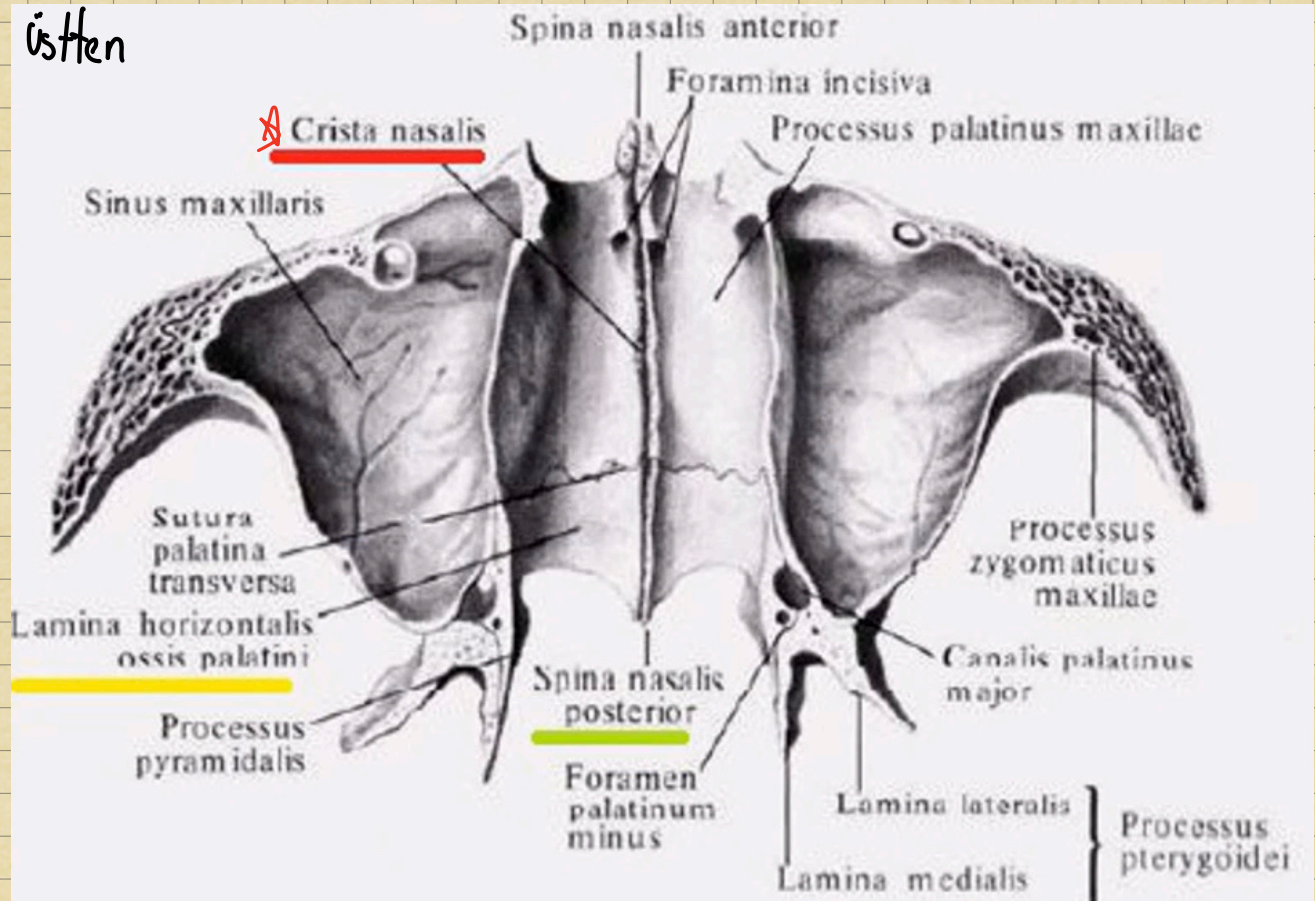


*Bu ikisiyle
eklen
yapılır*

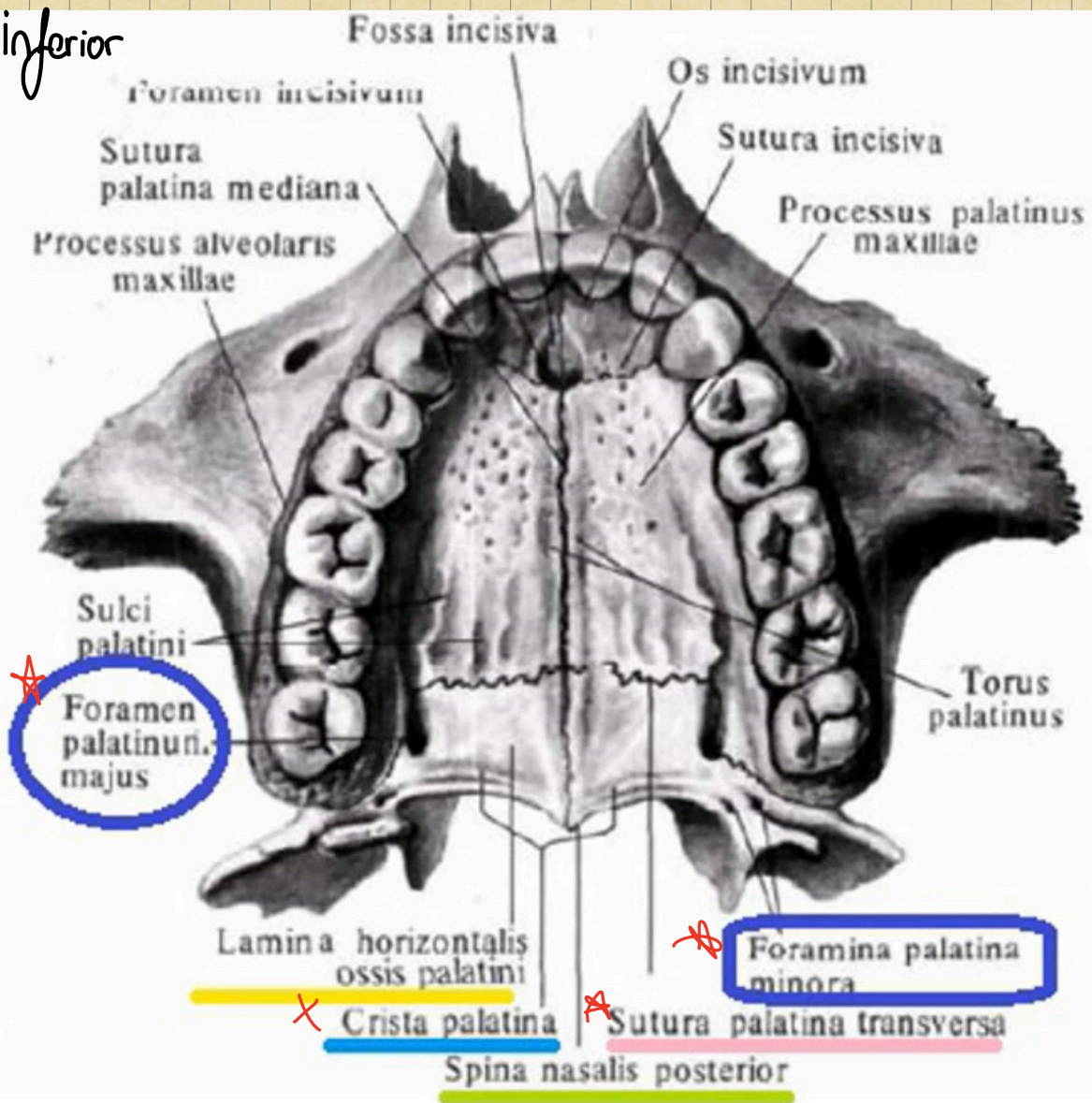




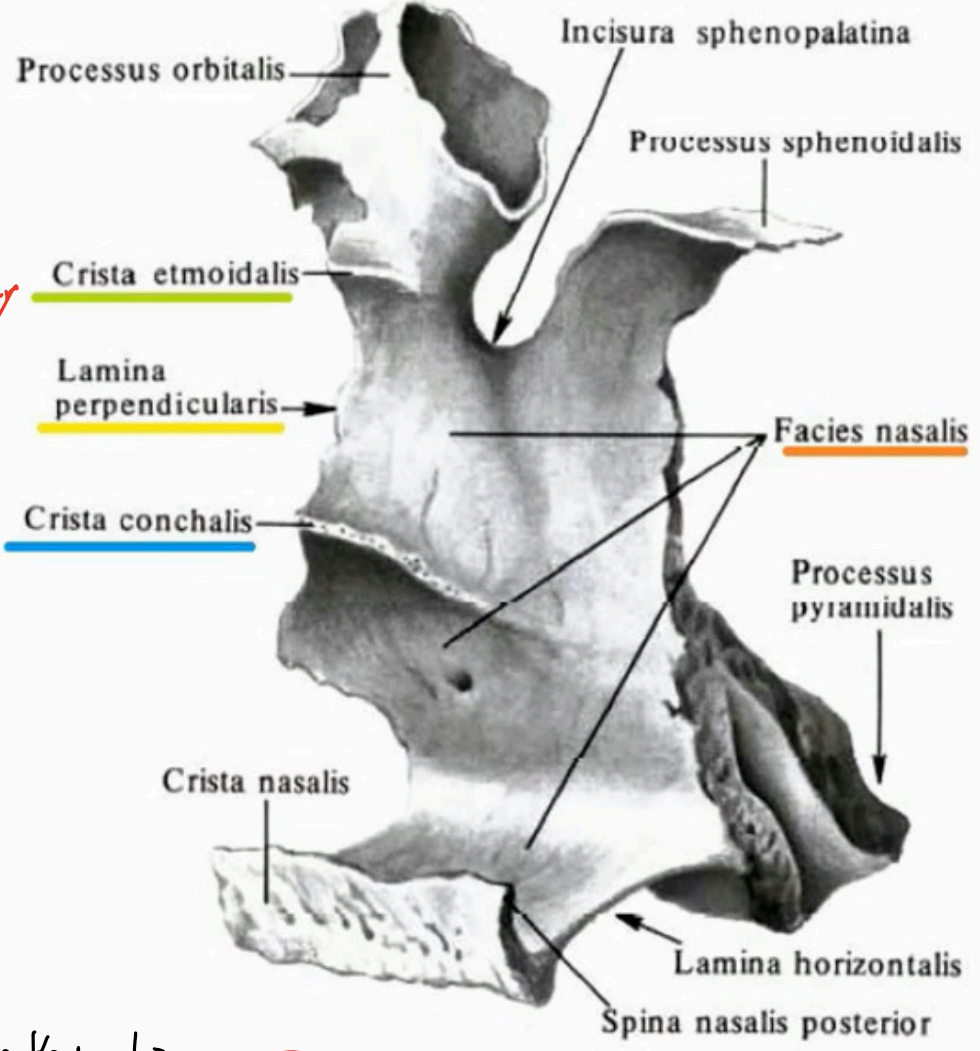
Üstten



inferior

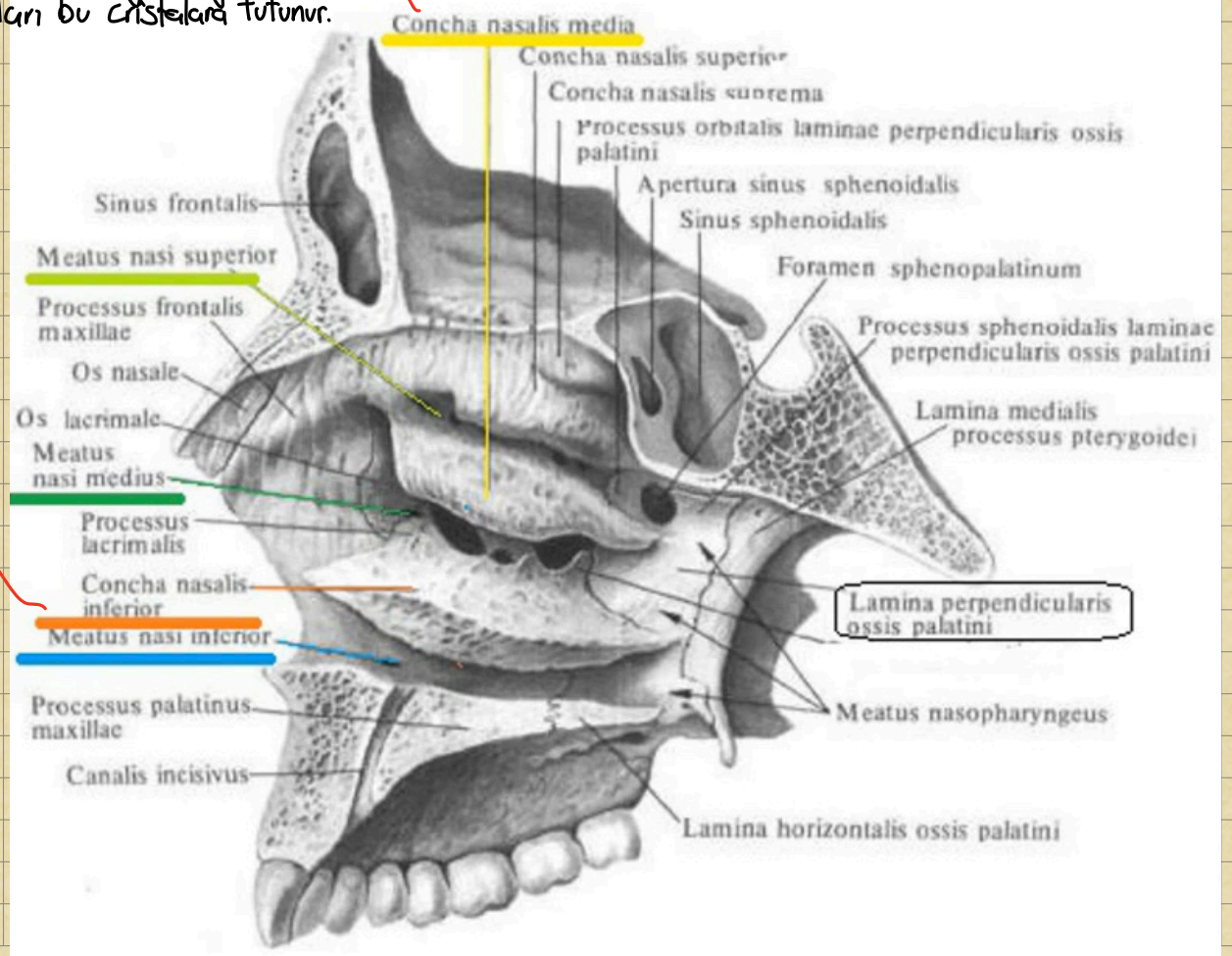


Lamina Perpendicularis

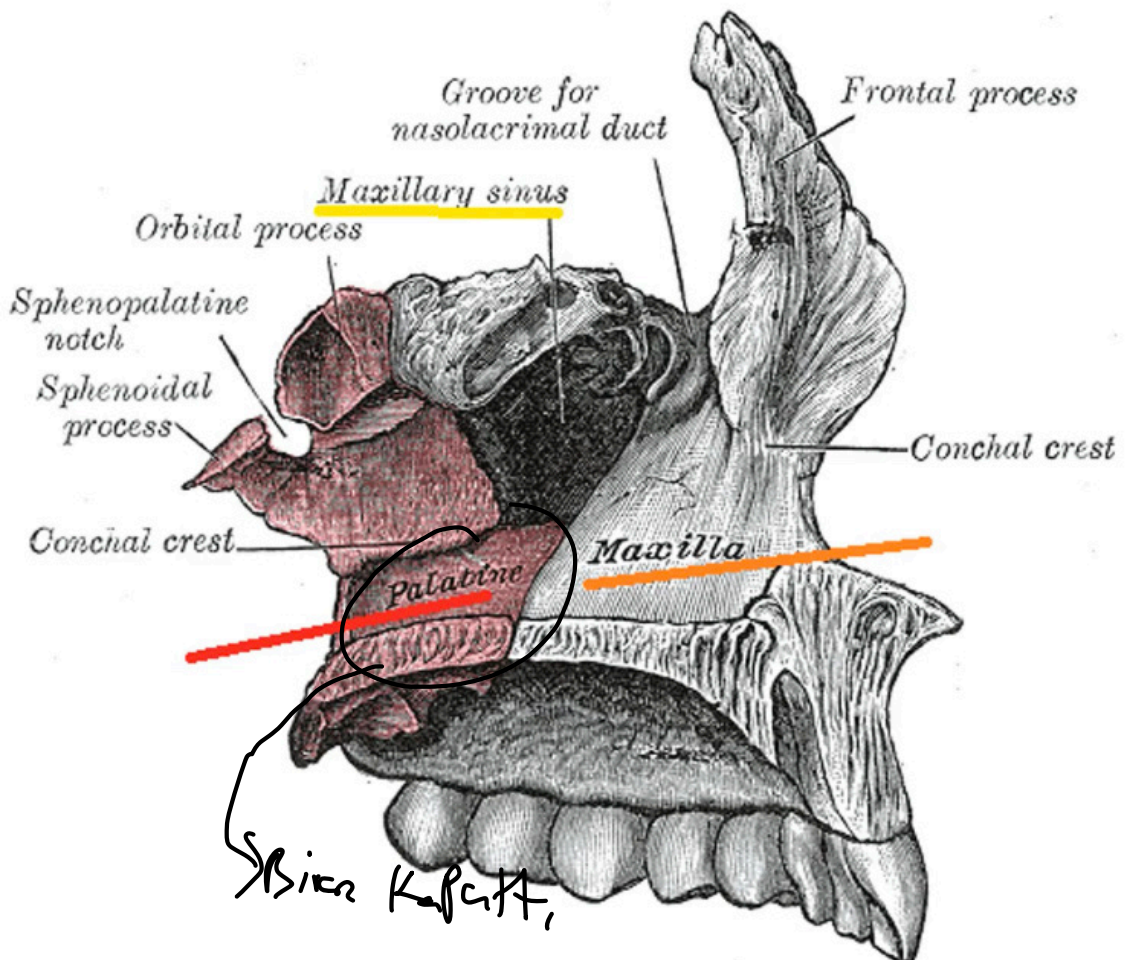
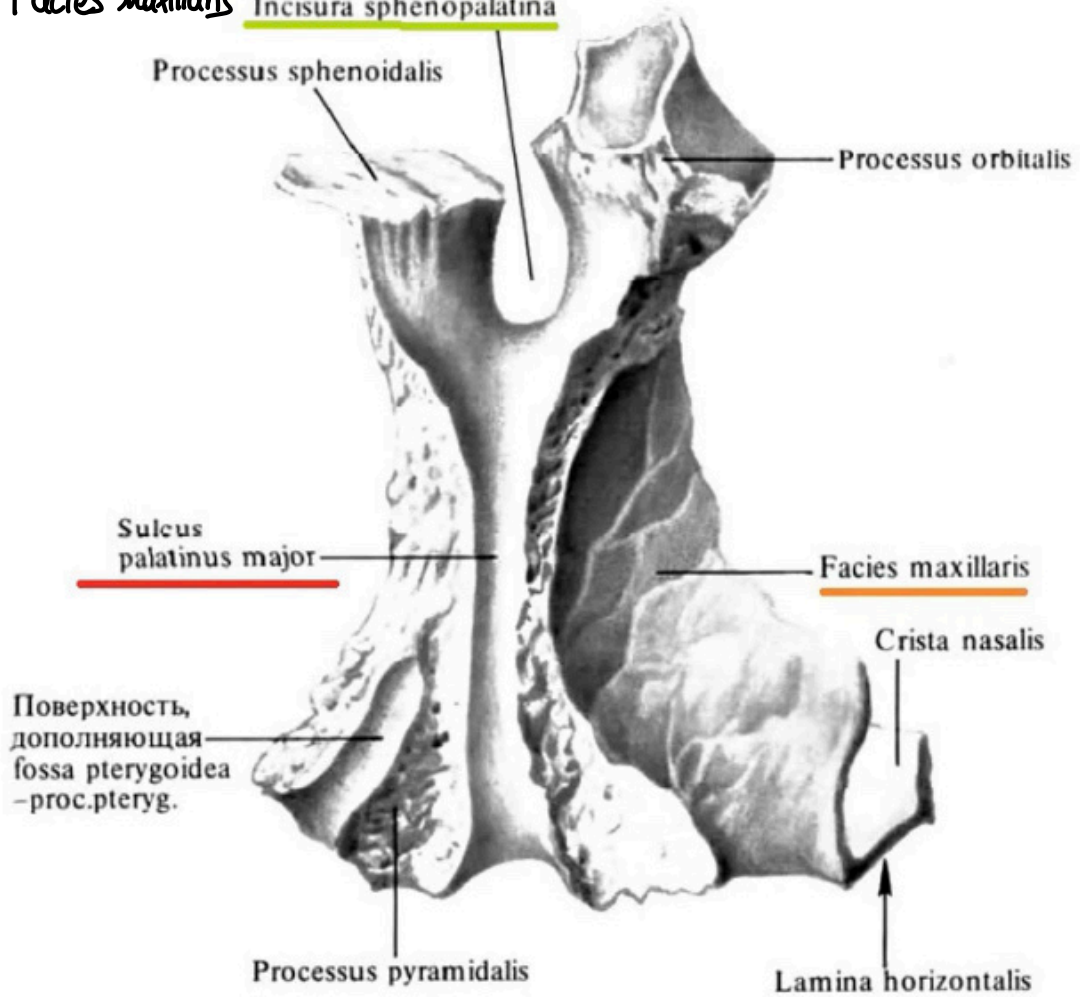


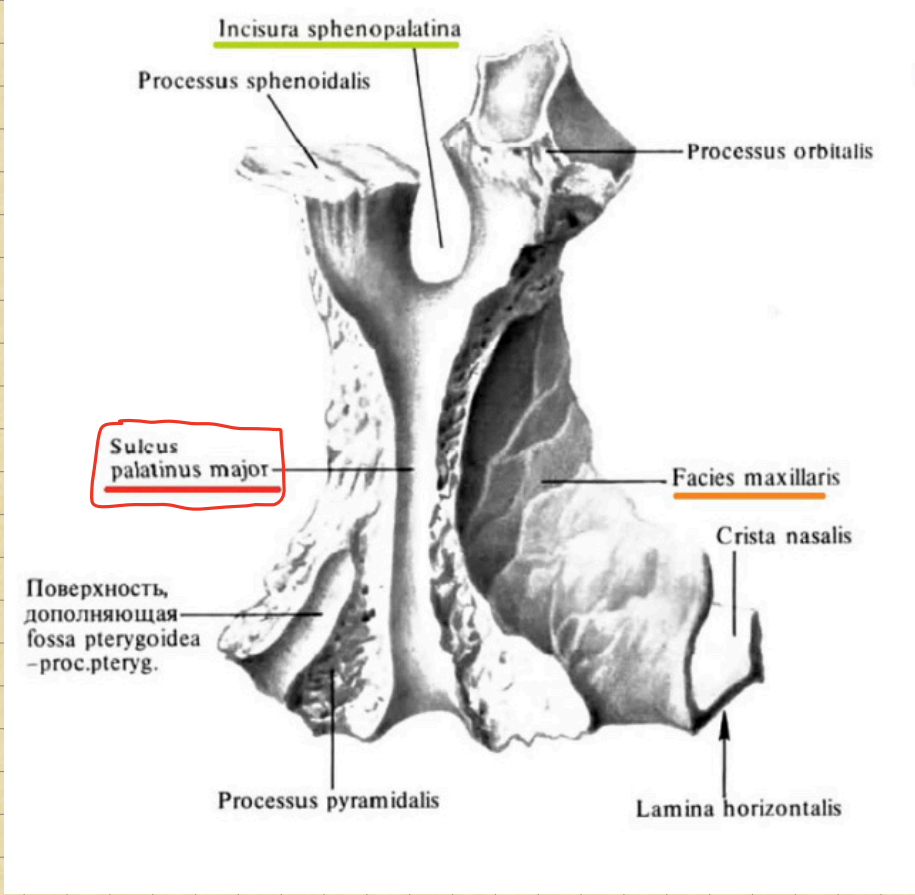
Maxilla
 affinis
 de vey

Conchaların arkaya doğru ve kısımları bu cristalara tutunur.

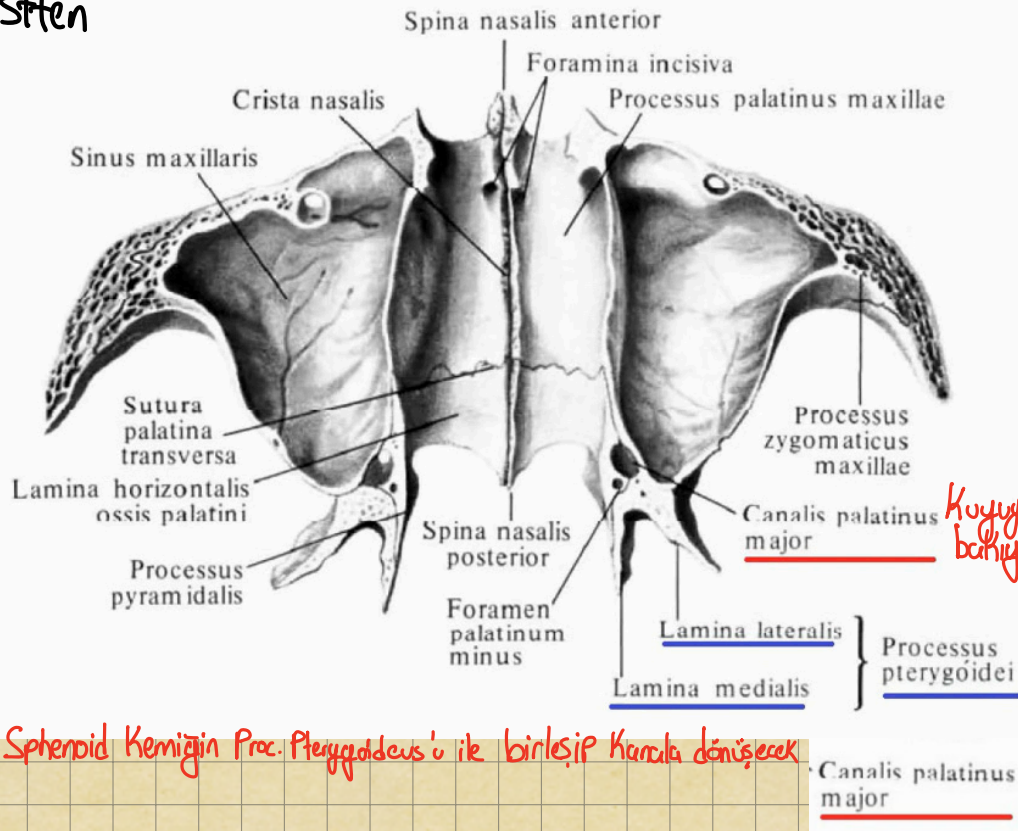


Facies Maxillaris Incisura sphenopalatina





Üstten



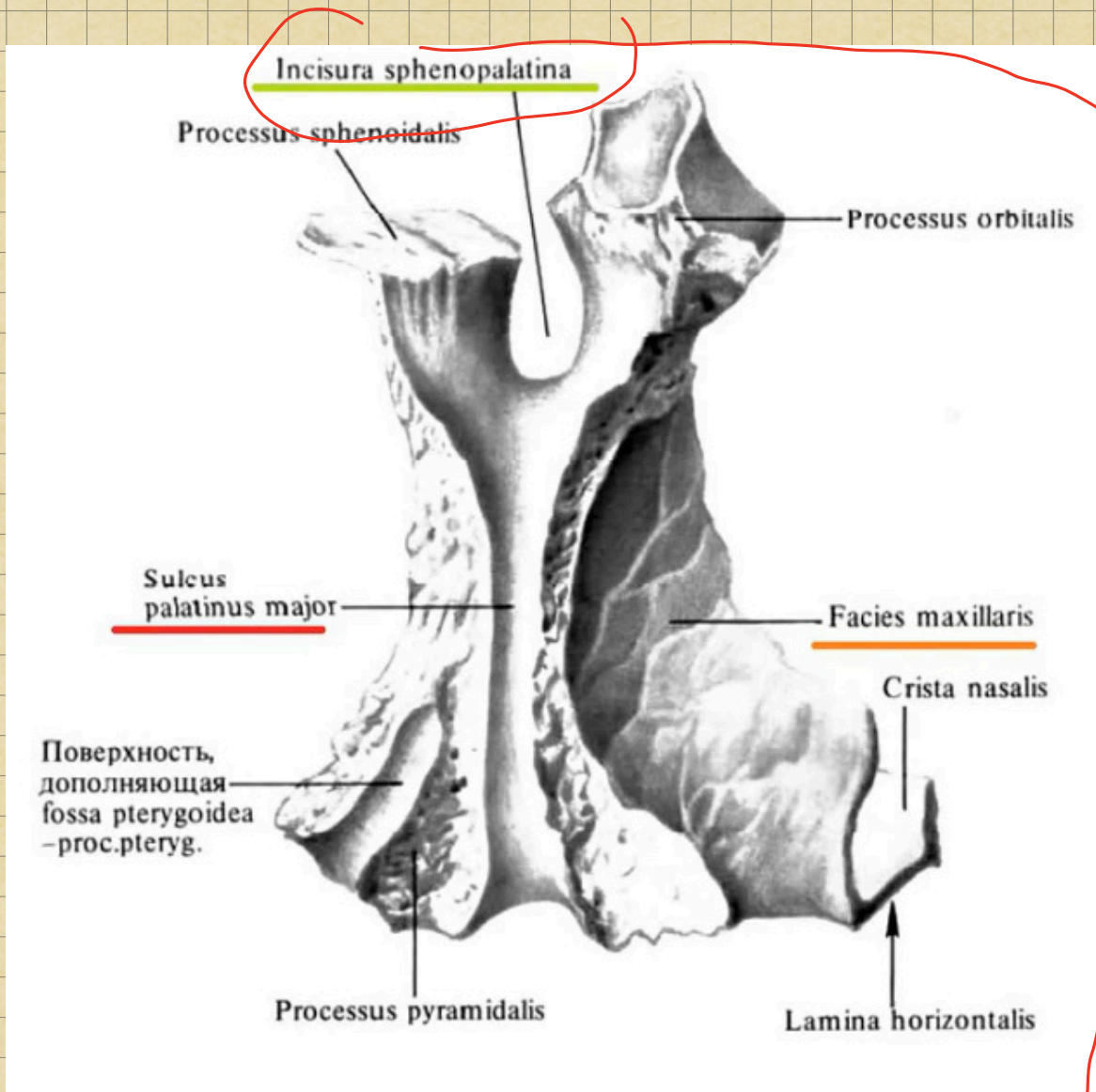
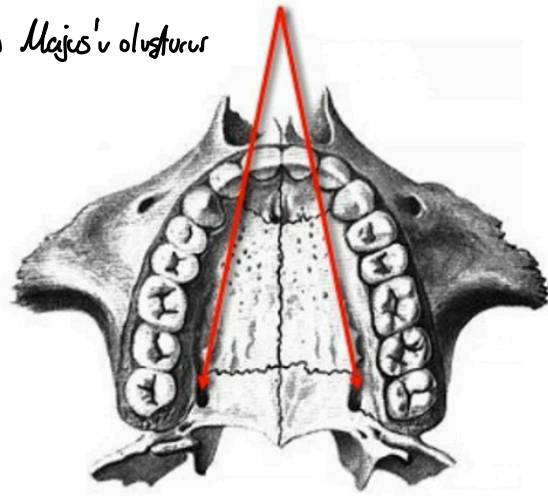
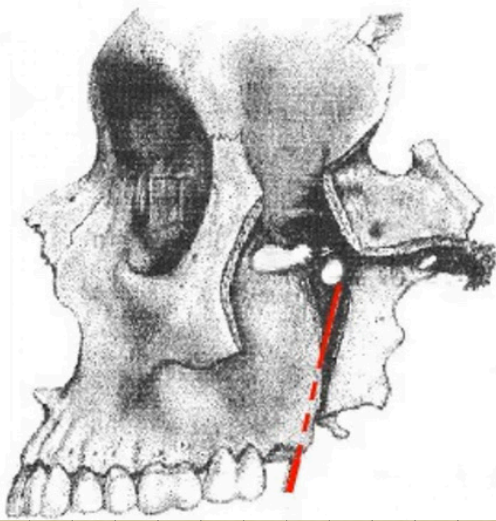
Kuyucu üstten bakıymuşuz gibi

Bu sulcus Sphenoid Kemigini Proc. Pterygoideus'u ile birleşip Kanala dönüşecek

Canalis palatinus major

Greater palatine canal (canalis palatinus major)

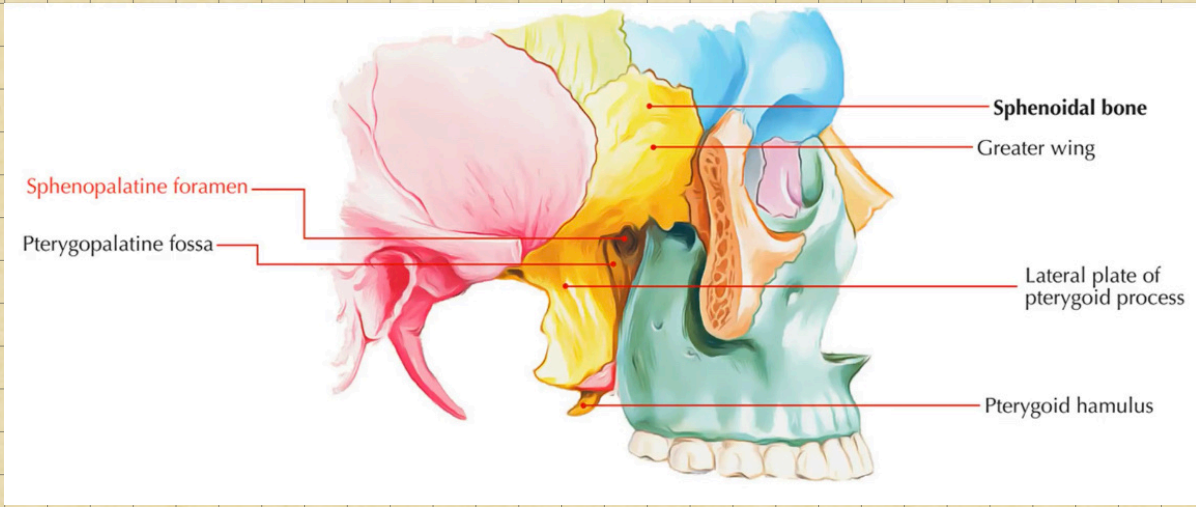
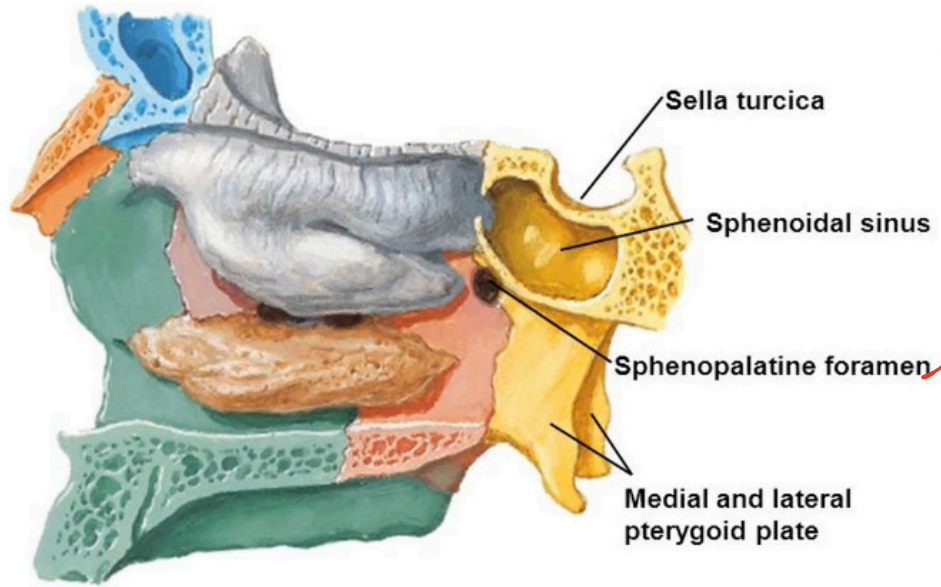
○ Kanal, Foramen Palatinum Majus'ü olusturur



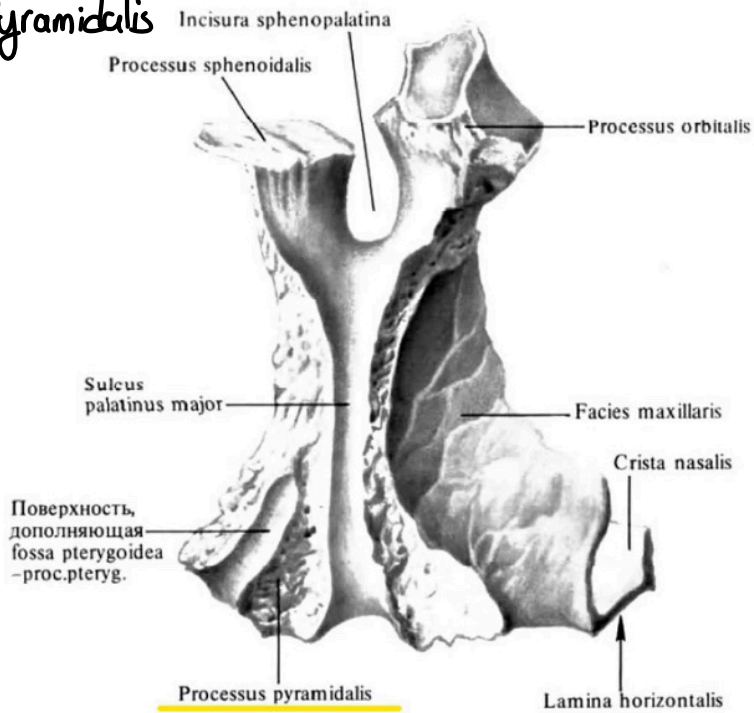
Sphenoid kemiğinin gövdesi incisuraya yerleşince foramen oluşturu.

Sphenoid bone

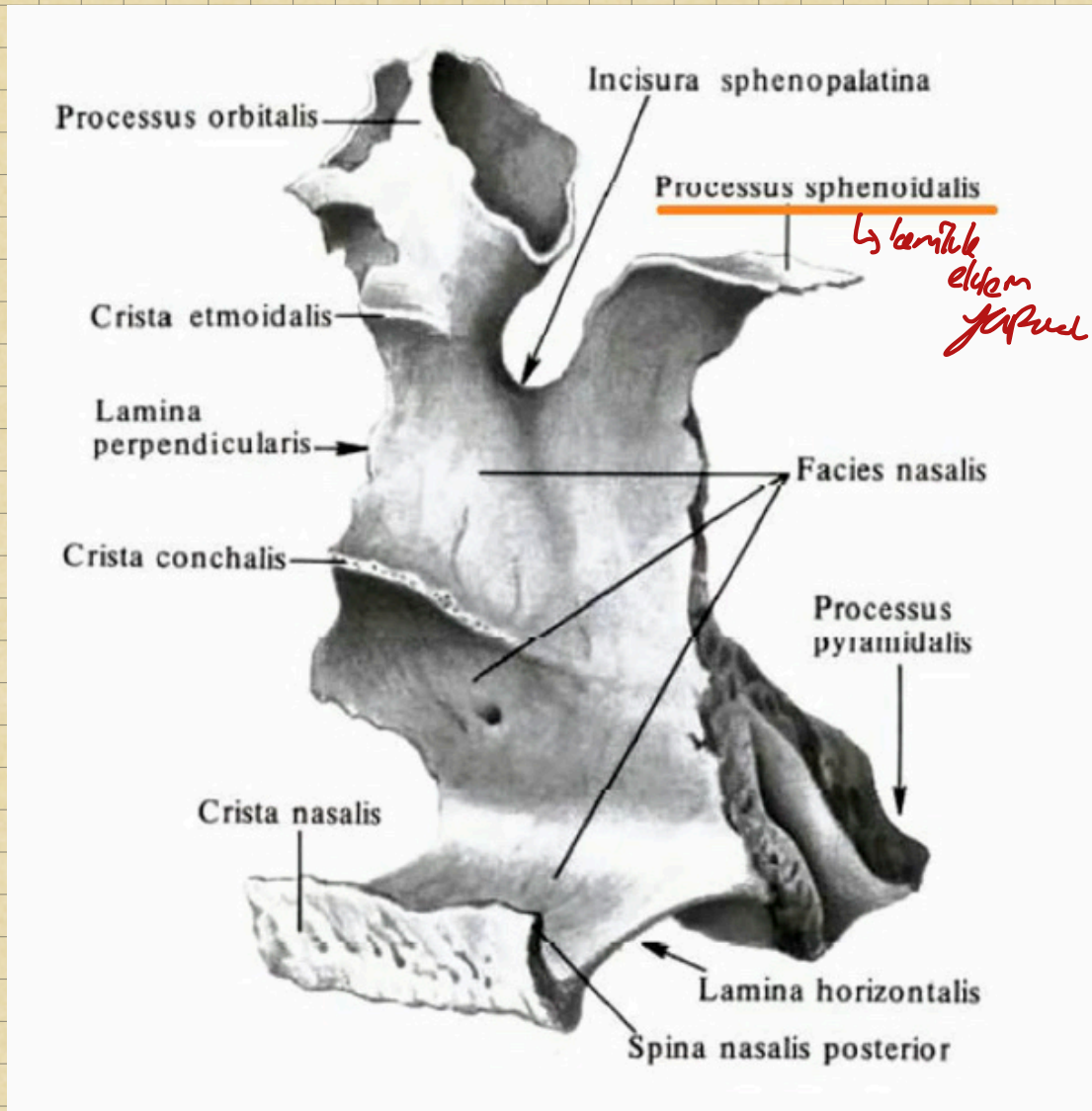
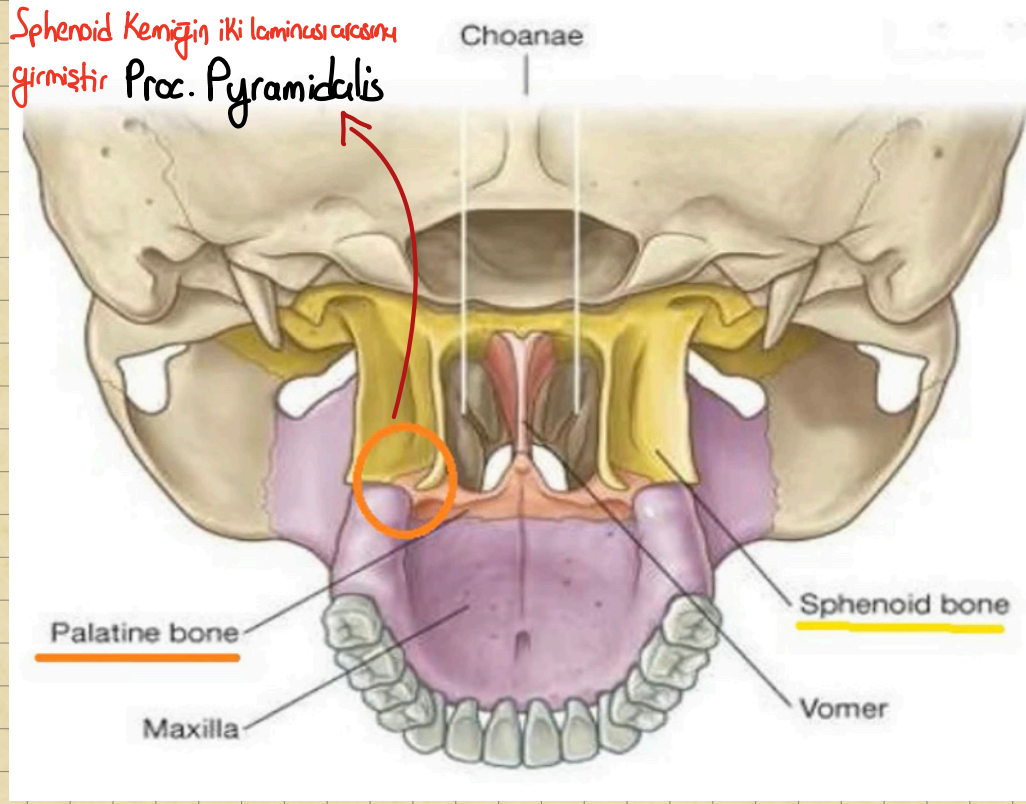
Skull - Nasal Conchae Exposed Sagittal Section

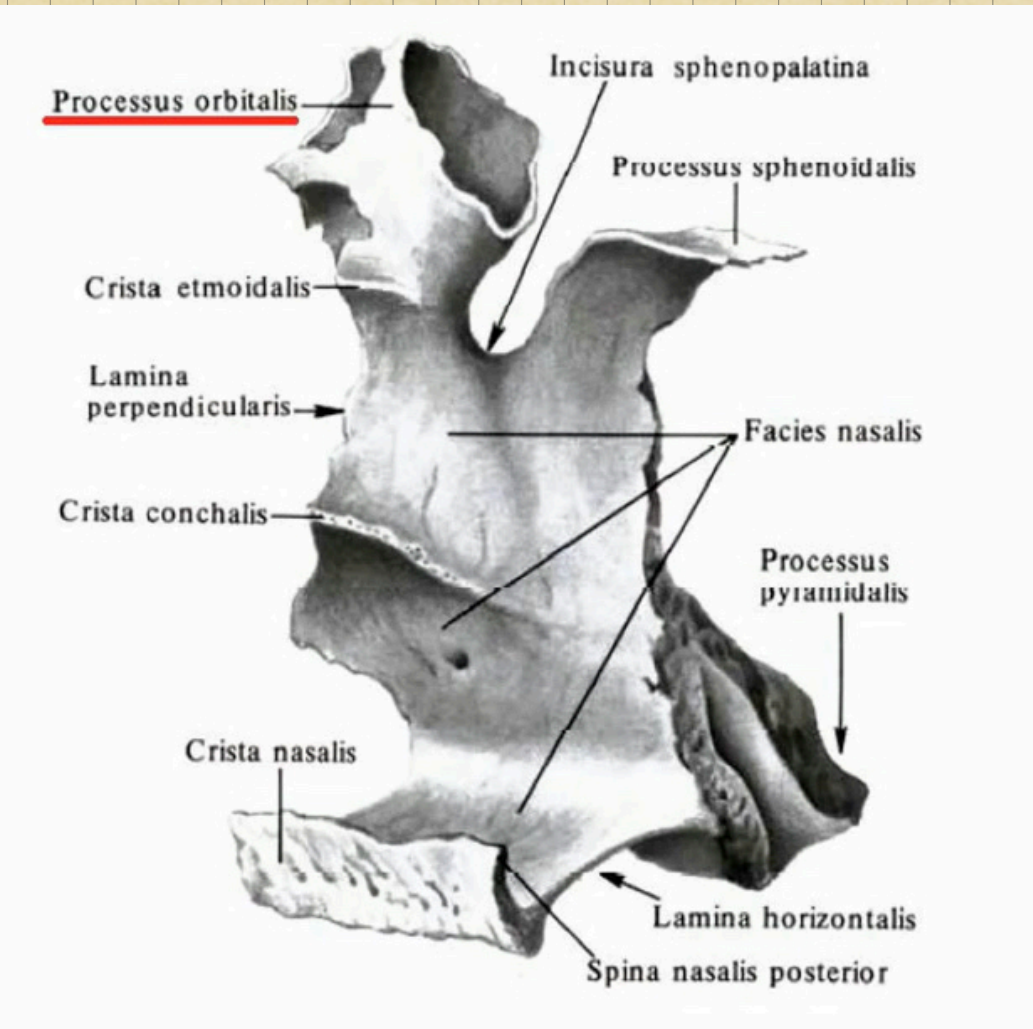
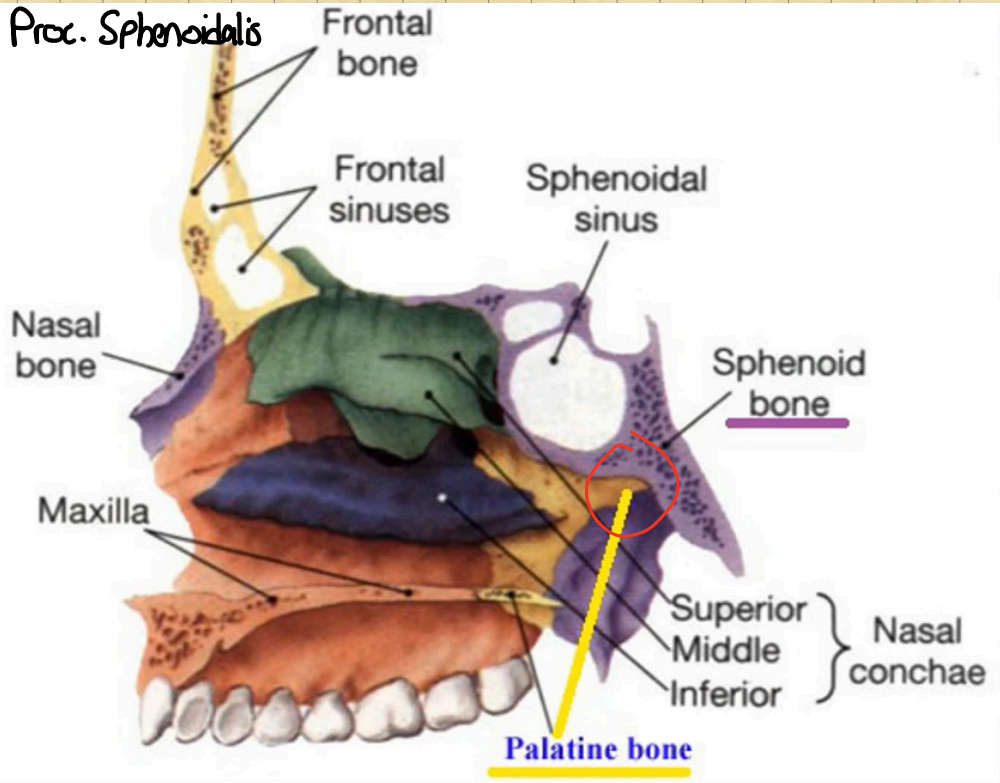


Proc. Pyramidalis



Sphenoid Kemig'in iki laminası arasına
girmistir Proc. Pyramidalis





Inferior orbital fissure (fissura orbitalis inferior)

Sinir belderi

